



GOOD MORNING
Have Good Trading Day

WEDNESDAY



Price is what you pay.
Value is what you get.

- Warren Buffet



MARKET PULSE

INDIAN INDICES

NAME	CMP	NET CH.	%
SENSEX	27787	+40	+0.15
NIFTY	8528	+19	+0.23

INDIAN ADR'S

SYMBOL	CLOSE	GAIN/ LOSS %
DRREDDY	53.51	Unch
HDFCBANK	68.62	-0.13
ICICIBK	7.90	-0.63
INFY	16.65	-1.01
TATAMOTOR	36.77	-0.27
WIPRO	11.04	-6.84

FII AND MF ACTIVITY

SYMBOL	In Crs.
FIIs Eq (Provisional)	548.90
FIIs Index Future	552.52
FIIs Index Options	-117.56
FIIs Stock Future	-236.29
FIIs Stock Options	-136.14
DII's Eq (Provisional)	-377.43

CURRENCY

RBI RATE	19-JULY-2016
RUPEE - \$	67.1462
EURO	74.3443
YEN 100	63.3500
GBP	88.7203

MARKET PULSE

GLOBAL INDICES

NAME	CMP	NET CH.	%
DOW	18559	+25	+0.14
NASDAQ	5036	-19	-0.38
NIKKEI	16602	-120	-0.72
HANG SENG	21854	+180	+0.83
SGX NIFTY	8569	+14	+0.16

WORLD COMMODITIES

FUTURE	U\$\$	CHANGES
CRUDE	45.47	+0.02
NATURAL GAS	2.685	-0.004
GOLD	1332.5	+0.2
SILVER	19.975	-0.032
COPPER	2.2365	-0.0265

WORLD EVENTS

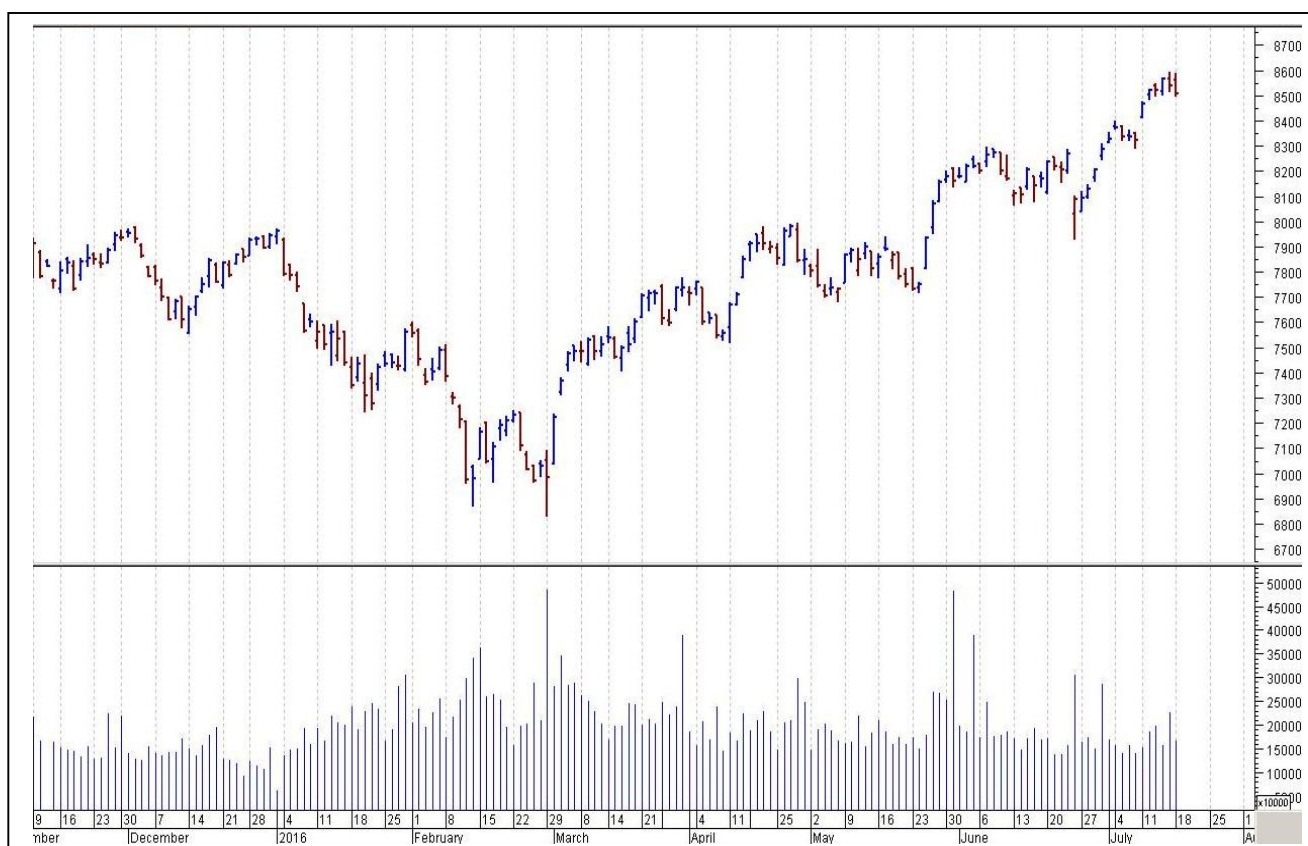
- US: Average Earnings Index 3m/y
- Claimant Count Change
- UK:Crude Oil Inventories

TOP STORY

- Wipro Q1 Cons Net Profit Down 8.3% At `2,052 Cr Vs `2,238 Cr (QoQ). IT Services Revenue Up 2.4% At `13,109 Cr Vs `12,796.7 Cr (QoQ)
- CRISIL Q2 Net Profit Down 11.2% At `69.8 Cr Vs `78.6 Cr (QoQ). Total Income Up 4.6% At `375.1 Cr Vs `358.7 Cr (QoQ).
- Yes Bank negotiating 4000 cr. Credit line for Nirma Lafarge deal (ET)
- Monsanto rejects Bayer's fresh \$55 bn offer as financially inadequate: Mint
- JBM Auto to invest Rs300cr towards electric mobility in India via its JV with Solaris Bus & Coach
- Government to allow 100% FDI in private banks(HT)
- Anant Raj approved demerger of real estate division and project division
- Exide to invest 1400 cr on new technology over next 2 years: BS
- Lenders to take control of cash strapped Lanco infratech(ET)



NIFTY CHART



MARKET COMMENTARY

After showing a sluggish trend for most part of the session, Indian benchmarks indices managed to negotiate a close in the green terrain, breaking the two session downtrend, on fresh buying by investors and foreign funds, on hopes of passage of the GST Bill in Rajya Sabha during the monsoon session of Parliament. Sentiments remained buoyant with a report of global financial services major Morgan Stanley, revising upwards its India growth estimate for this year to 7.7 percent from 7.5 percent earlier, because of 'positive surprises' in the macro data. According to it the growth recovery is becoming more broad-based, driven by public capex, FDI and consumption. Some support also came with Chief economic adviser (CEA) to the finance ministry Arvind Subramanian's statement that the Indian economy can grow at more than 8 per cent in the next decade, if global economic environment remains supportive. However, markets participants remained cautious with the RBI Governor Raghuram Rajan's statement that India has a long way to catch up with China on per capita GDP and will need years of strong growth and cautioned against expanding economy at the cost of environment. For today's trade Nifty likely to trade in the range between 8535 – 8545 in the upper side and 8495 – 8475 in the lower side.

MARKET LEVELS

	CMP	SUPPORT LEVELS				RESISTANCE LEVELS			
NIFTY	8528	8495	8475	8465	8435	8535	8545	8555	8585
USDINR	67.19	67.1	67	66.9	66.8	67.3	67.4	67.5	67.6



BULK DEALS (BSE)

SCRIP	CLIENT NAME	BUY/SELL	QUANTITY	PRICE
MODEX	WEGMANS FINANCIAL SERVICES LTD	B	16,358	103.14
VISHAL	NEW LEAINA INVESTMENTS LIMITED	B	66,000	178

BULK DEALS (NSE)

SCRIP	CLIENT NAME	BUY/SELL	QUANTITY	PRICE
GOKEX	ICICI BANK LTD. (INVESTMENT)	SELL	507291	105.9
ARSSINFRA	GOPI KISHAN MALANI	BUY	160313	100.45

SCRIP'S IN F&O BAN

(To resume for normal trading below 80% of market wide limit required)

BANKINDIA, CANBK, IBREALEST, JINDALSTEL, JPASSOCIAT, ORIENTBANK, PNB, RCOM

Initial Public Offering (IPO)

Company Name	Security type	Issue Start Date	Issue End Date	Status
Advanced Enzyme Technologies Ltd	Equity	20-JULY-2016	22-JULY-2016	Forthcoming
L&T Infotech Ltd	Equity	11-JULY-2016	13-JULY-2016	Closed



NIFTY 50 STOCKS: SUPPORT & RESISTANCE						
Symbol	Close	Support 1	Support 2	Pivot Point	Resistance1	Resistance2
ACC	1603	1584	1566	1598	1616	1630
ADANI PORTS	221	217	214	220	223	225
AMBUJACEM	263	260	256	262	265	267
ASIANPAINT	1031	1022	1014	1030	1038	1046
AXISBANK	565	562	558	568	572	578
BAJAJ-AUTO	2759	2748	2737	2756	2767	2775
BANKBARODA	158	156	153	159	162	165
BHARTIARTL	364	359	353	363	369	374
BHEL	140	138	136	139	141	143
BOSCH LTD	24390	24050	23709	24274	24614	24838
BPCL	572	559	547	567	579	587
CAIRN	176	172	169	174	178	180
CIPLA	506	501	496	506	511	515
COALINDIA	319	317	315	320	322	326
DRREDDY	3586	3565	3544	3584	3605	3624
GAIL	386	380	375	386	391	397
GRASIM	4760	4729	4698	4777	4808	4856
HCLTECH	730	721	713	727	735	740
HDFC	1339	1328	1317	1342	1353	1367
HDFCBANK	1218	1211	1204	1221	1228	1238
HEROMOTOCO	3231	3204	3178	3235	3262	3292
HINDALCO	138	137	135	138	139	141
HINDUNILVR	895	886	878	897	905	916
ICICIBANK	269	265	260	268	272	275
IDEA	106	104	101	105	108	109
INDUSINDBK	1107	1096	1085	1115	1126	1145
INFY	1087	1077	1068	1084	1093	1100
ITC	249	246	244	248	251	253
KOTAKBANK	778	771	764	776	783	788
LT	1573	1562	1551	1573	1584	1595
LUPIN	1694	1670	1646	1686	1710	1726
M&M	1457	1442	1426	1458	1473	1490
MARUTI	4486	4451	4416	4475	4510	4534
NTPC	156	155	154	156	157	158
ONGC	221	218	215	220	223	226
PNB	131	128	126	131	134	137
POWERGRID	166	164	161	165	168	169
RELIANCE	1018	1001	984	1012	1029	1040
SBIN	230	227	224	230	232	235
SUNPHARMA	782	778	773	782	787	792
TATAMOTORS	499	494	489	499	504	509
TATAPOWER	70	70	69	70	71	72
TATASTEEL	370	365	359	368	374	377
TCS	2466	2438	2410	2456	2484	2501
TECHM	508	504	500	508	512	516
ULTRACEMCO	3508	3467	3427	3515	3555	3603
VEDL	160	158	155	160	162	165
WIPRO	549	544	539	549	554	559
YESBANK	1153	1141	1128	1156	1168	1183
ZEEL	466	461	455	466	471	476



CORPORATE ACTION / BOARD MEETINGS

NSE Download Ref No : NSE/FAOP/32406:- Exclusion of Futures and Options contracts on Unitech Limited (UNITECH) w.e.f. July 29, 2016

BOARD MEETINGS

COMPANY NAME	DATE	PURPOSE	RS. PER SH.
SHRIRAMCIT	20-Jul-16	Annual General Meeting/Dividend	10
TUBEINVEST	20-Jul-16	Annual General Meeting/Dividend	3.5
SURYALAXMI	20-Jul-16	Annual General Meeting/Dividend	1.8
LALPATHLAB	20-Jul-16	Annual General Meeting/Dividend	2.45
SWELECTES	20-Jul-16	Annual General Meeting/Dividend	1
KTKBANK	20-Jul-16	Annual General Meeting/Dividend	5
HIL	20-Jul-16	Annual General Meeting/Dividend	10
INDOCO	20-Jul-16	Annual General Meeting/Dividend	0.2
ASTRAMICRO	20-Jul-16	Annual General Meeting/Dividend	1.2
APLLTD	20-Jul-16	Annual General Meeting/Dividend	4
MAHLIFE	20-Jul-16	Annual General Meeting/Dividend	6
ADORWELD	21-Jul-16	Dividend	5
ALKALI	21-Jul-16	Annual General Meeting/Dividend	0.4
CHOLAFIN	21-Jul-16	Annual General Meeting/Dividend	2
BALAMINES	21-Jul-16	Annual General Meeting/Dividend	2
DLINKINDIA	21-Jul-16	Dividend	0.7
EXCELCROP	21-Jul-16	Annual General Meeting/Dividend	12.5
GABRIEL	21-Jul-16	Annual General Meeting/Dividend	0.75
ELGIEQUIP	21-Jul-16	Annual General Meeting/Dividend	1
HESTERBIO	21-Jul-16	Dividend	1.1
M&M	21-Jul-16	Annual General Meeting/Dividend	12
MERCATOR	21-Jul-16	Annual General Meeting/Dividend	0.1

NEWS & RUMOURS:

- Gold (Spot Dollar) major support = \$1305/\$1272 & Resistance = \$1362/\$1391.
- Crude oil range->\$42 to \$52.
- Stocks Take a Breather as Earnings Disappoint, Dollar Advances: - Global markets are pressing the pause button. U.S. stocks slipped after benchmark equity indexes closed at fresh records, as investors assessed a mix of earnings reports. Declines in miners dragged European stocks down from a three-week high. The dollar gained after U.S. housing starts rose more than forecast, while the pound extended losses as the International Monetary Fund cut its growth projection for the U.K.
- Dollar hits four-month high as data backs U.S. economic strength: - The dollar rose to a four-month high against a basket of major currencies on Tuesday after the release of data showing U.S. housing starts rose more than expected in June, underpinning a theme of strength in the U.S. economy.
- U.S. natural gas futures jump amid spreading heatwave: - U.S. natural gas futures bounced back from the prior session's losses on Tuesday, as investors bet a heat wave making its way across the continental U.S. will prompt households to ramp up their air conditioning.
- Gold holds steady as markets focus on central bank policies: - Gold prices were little changed in European trade on Tuesday, as investors assessed the possibility of more monetary easing by global central banks.
- Oil flips between gains and losses ahead of API supply report: - Oil prices struggled for direction in North American trade on Tuesday, flipping between small gains and losses as market players looked ahead to fresh weekly information on U.S. stockpiles of crude and refined products.

TRENDS & OUTLOOK – DATE: 20- July- 2016

PRECIOUS METALS:

COMMDITY (MCX)	S2	S1	PIVOT POINT	R1	R2
GOLD (Aug)	30570	30810	31030	31300	31579
SILVER (Sep)	44800	45700	46900	48000	49300

BASE METALS

COMMDITY (MCX)	S2	S1	PIVOT POINT	R1	R2
COPPER (Aug)	327	331	336	343	348
ZINC (July)	145.35	147.20	149.40	151.90	154.60
LEAD (July)	119.50	122.20	124.90	127.20	129.40
NICKEL (July)	671	684	702	720	736

ENERGY

COMMDITY (MCX)	S2	S1	PIVOT POINT	R1	R2
CRUDE OIL (Aug)	2910	2997	3096	3175	3267
NATURAL GAS (July)	173	178	184	189	194

DATE TALKS : TODAY'S ECONOMIC DATA :

Claimant Count Change of GBP, CB Leading Index, Consumer Confidence of EUR, Crude Oil Inventories.



Registered Office

Indira House, 3rd Floor, 5 Topiwala Lane,
Opp. Lemington Road Police Station, Grant Road (East), Mumbai - 400007.

Corporate Office

'Ramavat House' E-15, Saket Nagar, Indore - 452018 (M.P.)

Customer Care

Tel: +91-731-4097170/ 71/ 72/ 73/ 74 M. +91 93031 72345

Email: customercare@indiratrade.com www.indiratrade.com



INSTITUTIONAL DEALING UNIT

Africa House, 5, Topiwalla Lane, Lamington Road, Mumbai, 400007

Tel: +91 22 30080678 Fax : +91 22 23870767 Email : ie@indiratrade.com

Disclaimer

This report is for private circulation within the Indira Group. This report is strictly confidential and for information of the selected recipient only and may not be altered in any way, transmitted to, copied or distributed, in part or in whole, to any other person or to the media or reproduced in any form. This report should not be construed as an offer or solicitation to buy or sell any securities or any interest in securities. It does not constitute a personal recommendation or take into account the particular investment objectives, financial situations, or any such factor. The information, opinions estimates and forecasts contained here have been obtained from, or are based upon, sources we believe to be reliable, but no representation of warranty, express or implied, is made by us to their accuracy or completeness. Opinions expressed are our current opinions as of the date appearing on this material only and are subject to change without notice.